



RIOScan

Digital Imaging Plate System

Advances at a Glance

Fast and intuitive workflow

RIOScan offers various functions to minimize work time.

- 5 second scan time (HS Mode)
- **Automatic plate detection :**
Plate insertion and correct plate side is detected for image reading.
- **Auto erasing**
- **Preview function :**
Users can check the images through the touch screen whether they are properly attained.
- **QuickScan mode :**
Images can be scanned and stored in the internal memory while network connection has dropped.

Multiple access and sharing in your clinic

Users can place RIOScan at any small space in their clinics, such as chair side, worktable or x-ray room, for convenient scanning.
Ethernet connection enables users to view the images in every PC in the clinic.

Convenient image management

RIOView software provides convenient features such as image management, image measurement, multi-view and FMX (Full Mouth X-ray) mode.

Users can also adjust image filters upon their preferences including sharpness, brightness and contrast.

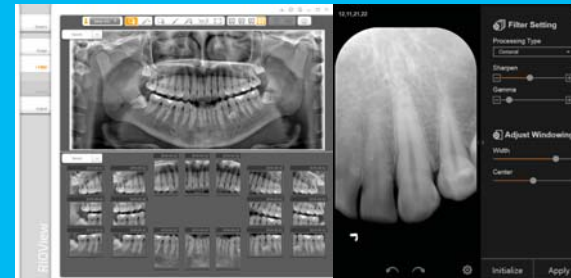


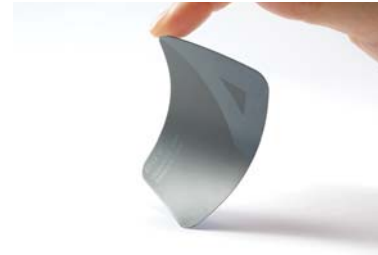
Image preview

Automatic plate detection

Gravity scan

Auto erasing

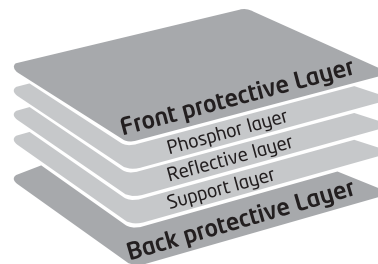




Patient comfort & Easy examination

- Flexible and soft image plates make x-ray examination painless for patients.
- Since plates are placed closer to gingiva area than intraoral sensors, image quality gets enhanced.
- Cable-free plates reduce users' difficulties.
- Users are free from positioning limits.

Advantages of Image Plate



Double protection of image plate

- Front and back protection layers reduce the risk of physical impact.
- There are no wire abrasions or connection errors that occur frequently on intraoral sensors.

High quality images for accurate diagnosis
5 different image plate sizes for all intraoral examinations



Obtained from local clinics and hospital

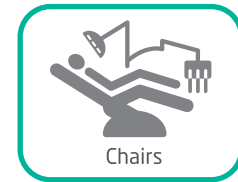
Enhanced Image Quality

For Chairside & Multi-share

2 Multi-access with Existing Ray Viewer SMARTDent¹⁾



Doctor Consultation



Chairs



Ethernet

1 Standalone RIOView



RIOView

3 Integration with Existing 3rd Party Viewer

TWAIN / RAY SDK
Bridge(PMS)
Gateway(PACS)



PACS Viewer



Workstation Viewer



Practice Management Software

Network environment

- Support standalone and multiple network access
- Support 3rd party integration with TWAIN, RAY SDK, bridge and gateway. (contact local representative)
- DICOM 3.0 compatible

Operating environment

Operating system	Microsoft Windows 7(32bit / 64bit) Microsoft Windows 8(32bit / 64bit) Microsoft Windows 10(32bit / 64bit)
Processor	Intel i5 or higher
Screen resolution	1280 x 800 or higher
Ethernet	100Mbps fast ethernet

¹⁾ SMARTDent server(RayServer) only operates under Windows 7 Professional.

Technical Data

Components



- 1 Touch screen
- 2 Image plate guide *
- 3 Power button
- 4 Image plate tray *
- 5 Image plate
- 6 Image plate storage box
- 7 Image plate storage box pad

* Removable and washable for hygienic purpose

Specifications

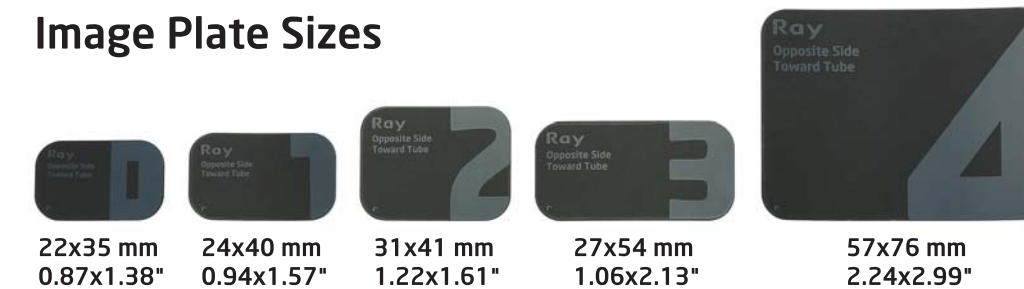
RIOScan(Model: RPS500)

Item	Standard package	Occlusal kit
Image plate size	Size 0~Size 3	Size 4
Resolution (Theoretical)	SHR 21 lp/mm HR 16 lp/mm HS 9 lp/mm	
Gray scale	14 bit	
Display	4.3" Touch screen	
Connection	Ethernet	
Dimension	170(W) x 260(H) x 278(D) mm	
Weight	Approx. 3.5 kg	
Power supply	100-240 V~, 1.5 A, 50-60 Hz, (24 VDC Adapter, 2.5 A)	

Operation Conditions

- Temperature : 10~35 °C
- Humidity : 20~80 % RH
- Atmospheric pressure : 800 hPa~1060 hPa

Image Plate Sizes



22x35 mm
0.87x1.38"

24x40 mm
0.94x1.57"

31x41 mm
1.22x1.61"

27x54 mm
1.06x2.13"

57x76 mm
2.24x2.99"

For more information or inquiries,
please visit **www.raymedical.com**
or contact your local representative.



Ray Co., Ltd. 🏢

332-7, Samsung1-ro, Hwaseong-si, Gyeonggi-do, 18380, Korea

Phone +82.31.605.1000

Email ray_overseas@raymedical.co.kr

Web www.raymedical.com